



Research article

## Microsatellite markers based heterozygosity assessment in *Jatropha curcas* L.: A potential bioenergy crop

Ramanuj Maurya<sup>1\*</sup> and Hemant Kumar Yadav<sup>1,2</sup>

<sup>1</sup>CSIR- National Botanical Research Institute, Rana Pratap Marg, Lucknow-226001, India

<sup>2</sup>Academy of Scientific and Innovative Research (AcSIR), New Delhi, India

\*Corresponding Author: [ramanuj\\_1985@rediffmail.com](mailto:ramanuj_1985@rediffmail.com)

[Accepted: 15 April 2016]

**Abstract:** The tree breeding is more difficult by the changes that occur during the transition from juvenility to maturity. A correlation between individual heterozygosities of parents and their offspring arises from the fact that, at most allelic frequencies, heterozygous parents produce higher proportion of heterozygous progeny than do homozygous parents. Microsatellite markers are an efficient tool for the assessment of heterozygosity and homozygosity. In order to assess the level of heterozygosity of *Jatropha curcas*, 56 SSRs markers were used for genotyping 48 progeny derived from selfed seeds of a single *J. curcas* plant. Out of 56, 7 SSRs could not produce sufficient and significant data as they failed to amplify in more than 70% genotypes and thus not considered for further analysis. Therefore, genotypic data of 49 SSRs were used for heterozygosity assessment. Out of 49 SSRs, 31 SSRs were found to be monomorphic and 18 polymorphic indicating homozygosity and heterozygosity on plants, respectively. The polymorphic SSRs showed allele variation from 2 to 9 with an average of 3.56 alleles per SSRs. The SSR JGM\_CD232 showed maximum of 9 alleles followed by SSR JGM\_CD348, JGM\_CD421, and JGM\_CD092 with 5 alleles. The heterozygosity, calculated as proportion of heterozygous individuals in population, varied from 0.00 to 1.00 with an average of 0.37. However, majority of the markers (61%, 11 out of 18) showed heterozygosity variation from 0.00 to 0.22 indicating low level of heterozygosity at these loci. The rest 7 SSRs showed heterozygosity from 0.6 to 1.0 (mean 0.84) indicating higher proportion of heterozygosity at these loci. In the present investigation, the heterozygosity assessment in *J. curcas* indicating low level of heterozygosity showed there is need to create genetic variability in *J. curcas* for genetic improvement.

**Keywords:** *Jatropha curcas* - SSR marker - Heterozygosity - Bioenergy crop.

[Cite as: Maurya R & Yadav HK (2016) Microsatellite markers based heterozygosity assessment in *Jatropha curcas* L.: A potential bioenergy crop. *Tropical Plant Research* 3(1): 191–198]

### INTRODUCTION

Climate change is one of the biggest threats to the earth's biodiversity loss. Due to high energy demand humans are continuously deployed the natural resources like coal, gas and oil which continuously increase the level of carbon dioxide in the environment and contribute to the global climate change. Over exploitation of fossils fuel reserves and the increasing incidences of environmental pollution demand the search for alternate and renewable sources of biofuels, including biodiesel. In order to fight the climate change biodiesel production from *Jatropha* oil has potential effect to reduce the hunger of carbon dioxide and to fight against the global climate change. Biofuels are renewable in nature and less polluting than petroleum based fuels (Openshaw 2000, Mandpe *et al.* 2005, Ong *et al.* 2011a). Among the various biodiesel sources, *Jatropha curcas* attracted more attention as a potential source of biofuels due to its non-food nature, oil-rich and widely adaptable properties (Heller 1996, Openshaw 2000, Sujatha *et al.* 2008, Makkar *et al.* 2009, King *et al.* 2009, Devappa *et al.* 2010, Johnson *et al.* 2011). The biodiesel production from *J. curcas* has been considered as an environment friendly renewable fuel alternative to alleviate the energy crisis (Fairless 2007, Ghosh *et al.* 2007). *J. curcas* L. is belonging to the family Euphorbiaceae having chromosome number  $2n=22$  (Dehgan 1984) with relatively smaller genome size of ~416 Mb (Carvalho *et al.* 2008, Sato *et al.* 2011). *J. curcas* L. is a tropical species native

to Mexico and Central America, but widely distributed in other tropical and sub-tropical areas of the world, especially in Africa, India and South-East Asia (Heller 1996, Sujatha & Prabhakaran 1997, Openshaw 2000). All part of *Jatropha* can be used for a wide variety of purposes rising from traditional medicine for common human and animal ailments, protection against land erosion and as a boundary fence or live hedge to newly found high economic potential as a fossil fuel replacement (Openshaw 2000, Sirisomboon *et al.* 2007, Rao *et al.* 2008).

Considering its global importance as promising biofuel plant genetic studies in *J. curcas* have been undertaken towards its genetic improvement through various means including traditional as well as biotechnological methods. A traditional approach of genetic improvement for polygenic traits is time and labor consuming. The molecular markers technique is most widely exploited with conventional breeding program to enhance the more accuracy and save the time. Number of molecular markers have been developed and used for the study of genetic diversity in *J. curcas* such as RAPD (Rosado *et al.* 2010, Machua *et al.* 2011, Ruffi *et al.* 2012, Kumar *et al.* 2013, Pamidimarri & Reddy 2014), ISSR (Kumar 2011, Grativol *et al.* 2011, Camellia *et al.* 2012, Soonthornyatara *et al.* 2015), AFLP (Quintero *et al.* 2011, Shen *et al.* 2012, Sinha & Tripathi 2013, Osorio *et al.* 2014, Avendano *et al.* 2015), SSRs (Yadav *et al.* 2011, Ricci *et al.* 2012, Kumari *et al.* 2013, Osorio *et al.* 2014, Maurya *et al.* 2013, 2015) and SNPs markers (Gupta *et al.* 2012, Montes *et al.* 2014, Trebbi *et al.* 2015).

Knowledge of genetic nature of *J. curcas* such as homozygosity and heterozygosity is one of the important aspects for the genetic improvement. Traditionally, biochemical markers were used for the detection of heterozygosity but facing problem for detecting polymorphic loci and heterozygosity (David 1998). Over recent years microsatellite have been applied extensively as a genetic markers for the detection of homozygosity and heterozygosity which replacing other techniques, such as self-pollination with subsequent progeny testing and morphological markers (Murovec *et al.* 2007). The most frequently used molecular markers for homozygosity and heterozygosity testing used to be randomly amplified polymorphic DNAs (Eimert *et al.* 2003, Yahata *et al.* 2005), but microsatellite markers are used much more nowadays because of their co-dominant nature and unambiguous result. Genetic enhancement of this important plant is now a major target for its sustainable productivity. Genetic improvements of *J. curcas* with the implementation of molecular markers with conventional breeding could be increased the productivity. Recently, some efforts have been done by some researcher for the development of improved better yielding genotypes through interspecific hybridization *J. curcas* with other related *Jatropha* species (Basha *et al.* 2009, Dhillon *et al.* 2009, Popluechai *et al.* 2009, Muakrong *et al.* 2013, Laosatit *et al.* 2014, Aruna *et al.* 2015).

The previous literature showed that the number of researchers have worked on the genetic diversity assessment in *J. curcas* using different molecular markers. However, there are no studies conducted in *J. curcas* for the heterozygosity assessment using SSR markers. Therefore, present investigation was undertaken for the assessment of heterozygosity in *J. curcas* which could be utilized in future for the genetic improvement of *J. curcas* to develop high yielding genotype.

## MATERIALS AND METHODS

### *Plant materials and genomic DNA isolation*

For the assessment of heterozygosity level in *Jatropha curcas*, one accessions *i.e.* NBJC147 was selfed to check cross pollination. The mature seeds were collected to raise seedling for heterozygosity assessment. Total genomic DNA was extracted from fresh young leaves of 48 seedling of selfed Hansraj and Chhatrapati using a modified CTAB (Cetyl Trimethyl Ammonium Bromide) method. The quality of DNA was checked on 0.8% agarose gel, and DNA concentration was determined using a Nanodrop spectrophotometer ND1000 (Nanodrop Technologies, DE, USA).

### *Polymerase chain reaction and fragment analysis*

PCR amplification was carried out in 10 $\mu$ l reaction mixtures that contained 10 ng genomic DNA, 1X PCR master mix (AmpliTaq Gold<sup>®</sup>, Applied Biosystems, USA), 0.1  $\mu$ l (5pmol/ $\mu$ l) of forward primer (tailed with M13 tag), 0.3 $\mu$ l (5pmol/ $\mu$ l) each of both reverse primer and M13 tag (labeled with either 6- FAM, VIC, NED and PET). PCR was performed on Verti Thermal Cycler (Applied Biosystems, USA) using the following cycling condition: initial denaturation at 95°C for 5 min followed by 36 cycle of 94°C for 30 s, 50-55°C (primer specific) for 45 s and 72°C for 1 min. Subsequently, 10 cycles of denaturation for 30 s at 94°C, annealing for 45

s at 53°C, extension for 45 s at 72°C followed by final extension for 15 min at 72°C was performed. The amplified PCR products from the parents and hybrids were resolved by TBE agarose gel electrophoresis using 1.5% Agarose (Geni) and then post PCR multiplex sets was prepared based on fluorescence labeled primers. For post PCR multiplex set, 1 µl FAM and 2 µl of each VIC, NED, and PET labeled PCR product were combined with 13 µl of water. 1 µl of this mixture was then added to 10 µl Hi-Di formamide containing 0.25 µl GeneScan™ 600 LIZ® as internal size standard. This was then denatured for 5 min at 95°C, quick chilled on ice for 10 min and run on a capillary-based 3730xl DNA analyzer (ABI, USA). Microsatellite loci repeats were assayed on the basis of their observed heterozygosity and number of alleles detected with PCR amplification profile. Fragment analysis was performed using GeneMapper software ver.4.0 and data were scored as allele size (bp).

#### Data scoring and Statistical analysis

SSR bands were scored as single independent locus. Well-resolved fragments were scored as present (1) or absent (0) for each marker locus. The allelic data of polymorphic SSRs were subjected to statistical analysis using Power Markers (Liu & Muse 2005) to calculate observed heterozygosity (Ho), gene diversity or expected heterozygosity (He), major allele number and polymorphic information content (PIC) value. The PIC value was calculated following Botstein et al. (1980) as follows:

$$PIC = 1 - \left[ \sum_{i=1}^n p_i^2 \right] - \left[ \sum_{i=1}^{n-1} \sum_{j=i+1}^n 2p_i^2 p_j^2 \right]$$

Where,  $P_i$  and  $P_j$  are the frequencies of  $i^{\text{th}}$  and  $j^{\text{th}}$  allele.

## RESULTS

#### Identification of polymorphic markers

Initially, 56 polymorphic SSR markers were selected from previously developed SSR markers from four SSR enriched genomic libraries (Maurya *et al.* 2013, 2015). These 56 SSR polymorphic markers were selected on the basis of PIC value which polymorphism was detected with a panel of 7 accessions of *Jatropha curcas* and 1 another species of *J. integerrima* (Maurya *et al.* 2013, 2015).

#### Heterozygosity Assessments

**Table 1.** Details of 56 SSRs for used for the heterozygosity detection.

Total SSRs screened	No. of polymorphic SSRs	No. of monomorphic SSRs	No. of failed SSRs
56	18	31	7

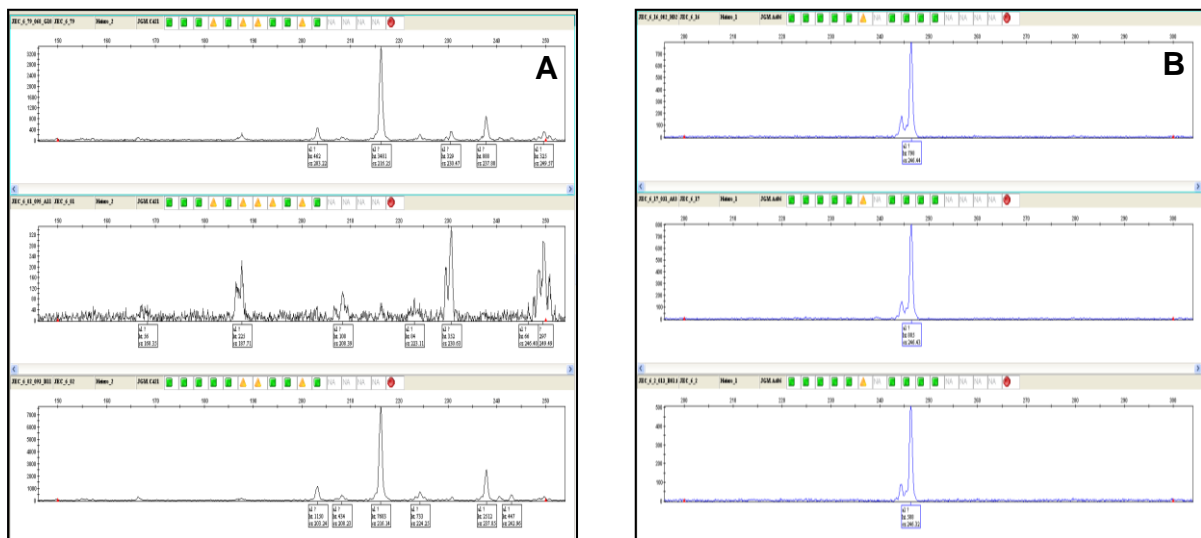
These selected 56 SSR markers were used for the heterozygosity assessment with 48 selfed *J. curcas* genotype. Among these, 49 showed clear PCR products across all the genotype, while only 9 were found non-specific amplifications (Table 1). Out of 49 SSRs, 31 SSRs were found monomorphic indicating that all the plants were homozygous at these loci and the rest, 18 SSRs were found polymorphic producing more than one allele and thus indicating heterozygous condition on these loci (Table 2). The heterozygosity, calculated as proportion of heterozygous individuals in population, varied from 0.00 to 1.00 with an average of 0.37.

**Table 2.** Polymorphism feature of 18 polymorphic SSRs among 48 progenies of single plants used for heterozygosity assessment.

Marker	Allele No.	Gene Diversity	Heterozygosity	PIC
JGM_A439	3.00	0.06	0.02	0.06
JGM_A464	2.00	0.49	0.63	0.37
JGM_B034	4.00	0.48	0.22	0.40
JGM_B038	4.00	0.12	0.04	0.12
JGM_B041	2.00	0.17	0.06	0.16
JGM_B054	3.00	0.10	0.02	0.10
JGM_B062	3.00	0.25	0.13	0.23
JGM_B190	2.00	0.50	0.96	0.37
JGM_B479	3.00	0.50	0.84	0.39
JGM_B586	3.00	0.54	1.00	0.44
JGM_CD005	3.00	0.06	0.02	0.06
JGM_CD092	5.00	0.29	0.00	0.28
JGM_CD106	3.00	0.52	0.77	0.41
JGM_CD232	9.00	0.25	0.08	0.25

JGM_CD421	5.00	0.53	1.00	0.42
JGM_CD469	3.00	0.50	0.09	0.40
JGM_CD128	2.00	0.04	0.00	0.04
JGM_CD348	5.00	0.55	0.73	0.48
Range	2.00-9.00	0.04-0.55	0.00-1.00	0.04-0.48
Mean±SD	3.56±1.69	0.33±0.20	0.37±0.41	0.28±0.45

However, majority of the markers 11 (61%) showed heterozygosity variation from 0.00 to 0.22 with an average of 0.22 indicating low level of heterozygosity at these loci. The rest 7 SSR showed heterozygosity from 0.6 to 1.0 with an average 0.84 indicating higher proportion of heterozygosity at these loci. The JGM\_CD232 showed maximum seven alleles followed by JGM\_CD170, JGM\_CD348 produced six allele while JGM\_CD421, JGM\_CD092 and JGM\_B034 produced five alleles. The di-nucleotide SSR markers (JGM\_B) showed less amplification with 48 genotype. However, tri-nucleotide SSR markers (JGM\_CD) showed maximum amplification with 48 genotypes. A representative snap shot from GeneMapper ver. 4.0 showing the polymorphic and monomorphic allele in heterozygosity assessment (Fig. 1).



**Figure 1.** Snap shot showing **A**, Polymorphic (heterozygous) **B**, monomorphic (homozygous) allele.

## DISCUSSIONS

Genetic variability is one of the essential requirements for crop improvement through plant breeding. The prime step in this process involves germplasm screening for establishment of genetic diversity. With the increasing knowledge on genome, molecular markers have been assisting the other marker system like morphological and quantitative data trait for genetic characterization studies. There are number of molecular markers have been developed in *J. curcas* and used for the genetic diversity assessment of *Jatropha* from different growing regions like China (Sun *et al.* 2008), Brazil (Rosado *et al.* 2010, Grativol *et al.* 2011), Mexico (Quintero *et al.* 2011), Thailand (Tanya *et al.* 2011), India (Bhasha *et al.* 2009, Maurya *et al.* 2013, 2015), but there is no any study on the screening of heterozygosity on the basis of molecular markers. The number of molecular markers like RAPD and AFLP were very quickly used for the genetic diversity analysis in *J. curcas* but these markers has its own disadvantages lacking of reproducibility (Karp *et al.* 1997, Hansen *et al.* 1998, Virk *et al.* 2000). However, microsatellite markers are codominant and highly polymorphic which can discriminate the homozygosity and heterozygosity of an individual. The selfed 48 genotypes were assessed with 56 SSR markers showed the 18 polymorphic which indicate the heterozygosity of these markers at different loci. The understanding the genetic basis genotypes will be quite useful to select suitable parental lines for hybridization programmes for the genetic improvement of *J. curcas*. Some preliminary research of homozygosity and heterozygosity have been done in different crops like rice (Liang *et al.* 2011), *Mimulus aurantiacus* (Murovec *et al.* 2007). The tree breeding is more difficult by the changes that occur during the transition from juvenility to maturity. Breeding populations can be characterized by quantifying the levels and organization of genetic variation within and between different breeding groups. Under the appropriate conditions, markers can replace phenotypic selection, thereby removing the need for growing or rearing of individuals (Chen *et al.* 2010). Markers- based systems have been used to study and compare the levels of

random genetic variation throughout the different cycles of a breeding programme, thus allowing much greater flexibility and control over the rate of reduction of genetic variability (Lia & Wua 2007). A correlation between individual heterozygosities of parents and their offspring arises from the fact that, at most allelic frequencies, heterozygous parents produce higher proportion of heterozygous progeny than do homozygous parents (Mitton *et al.* 1993). Microsatellite markers are an efficient tool for the assessment of heterozygosity and homozygosity. In the present investigation, the heterozygosity was assessed in *J. curcas* using SSR markers. Majority of the SSRs (64%) used to assess the heterozygosity were found to be monomorphic and 36% polymorphic. Majority of the markers (61%, 11 out of 18) showed heterozygosity variation from 0.00 to 0.22 indicating low level of heterozygosity at these loci. According to Lerner (1954) the high levels of heterozygosity enhanced the developmental homeostasis among individuals within populations and highly heterozygous individuals have lower level of phenotypic variation than predominantly homozygous individuals.

## CONCLUSION

In conclusion, the present study was the heterozygosity assessment using SSR markers of selfed *Jatropha curcas* conducted at juvenility stage. The heterozygosity assessment in *J. curcas* indicating low level of heterozygosity which warrants the urgent need to create genetic variability in *J. curcas* for genetic improvement.

## ACKNOWLEDGEMENT

The authors would like to thanks the Dr. C.S. Nautiyal, Director, CSIR-NBRI, for providing the necessary facilities during the investigation.

## REFERENCES

- Aruna R, Singh PS, Prakash CR, Ghosh A & Agarwal PK (2015) Development of *Jatropha* hybrids with enhanced growth, yield and oil attributes suitable for semi-arid wastelands. *Agroforestry System* 89: 1–13.
- Avendano R, Diaz EG, Melara MV, Solano NC, Villalobos AM, Cascante FA, Benavides BW & Solis-Ramos LY (2015) Genetic diversity analysis of *Jatropha* species from Costa Rica using AFLP markers. *American Journal of Plant Sciences* 6: 2426–2438.
- Basha SD, Francis G, Makkar HPS, Becker K & Sujatha M (2009) A comparative study of biochemical traits and molecular markers for assessment of genetic relationships between *Jatropha curcas* L. germplasm from different countries. *Plant Science* 176: 812–823.
- Botstein D, White RL, Skolnick M & Davis RW (1980) Construction of genetic linkage map in man using restriction fragment length polymorphisms. *American Journal of Human Genetics* 32: 314–331.
- Camellia NA, Thohirah LA & Abdullah NAP (2012) Genetic relationships and diversity of *Jatropha curcas* accessions in Malaysia. *African Journal of Biotechnology* 11: 3048–3054.
- Carvalho CR, Clarindo WR, Prac MM, Araujo FS & Carels N (2008) Genome size, base composition and karyotype of *Jatropha curcas* L.: an important biofuel plant. *Plant Science* 174: 613–617.
- Chen SY, Lin YT, Lin CW, Chen WY, Yang CH & Ku HM (2010) Transferability of rice SSR markers to bamboo. *Euphytica* 175: 23–33.
- David P (1998) Heterozygosity– fitness correlations: new perspectives on old problems. *Heredity* 80: 531–537.
- Dehgan B (1984) Phylogenetic significance of interspecific hybridization in *Jatropha* (Euphorbiaceae). *Systematic Botany* 9: 467–478.
- Devappa RK, Makkar HPS & Becker K (2010) Quality of biodiesel prepared from phorbol ester extracted *Jatropha curcas* oil. *Journal of the American Oil Chemist Society* 87: 697–704.
- Dhillon RS, Hooda MS, Jattan M, Chawla V, Bhardwaj M & Goyal SC (2009) Development and molecular characterization of interspecific hybrids of *Jatropha curcas* X *J. integerrima*. *Indian Journal of Biotechnology* 8: 384–390.
- Eimert K, Reutter G & Strolka B (2003) Fast and reliable detection of doubled-haploids in *Asparagus officinalis* by stringent RAPD-PCR. *Journal of Agricultural Science* 141: 73–78.
- Fairless D (2007) Biofuel: the little shrub that could—maybe. *Nature* 449: 652–655.
- Ghosh A, Chaudhary DR, Reddy MP, Rao SN, Chikara J, Pandya JB, Patolia JS, Gandhi MR, Adimurthy S, Veghela N, Mishra S, Rathod MR, Prakash AR, Shethia BD, Upadhyay SC, Balakrishna V, Praksh CR & Ghosh PK (2007) Prospects for *Jatropha* methylester (biodiesel) in India. *International Journal of Environmental Studied* 64: 659–674.

- Grativol C, Fonseca D, Lira MC, Hemerly AS & Ferreira PC (2011) High efficiency and reliability of inter-simple sequence repeats (ISSR) markers for evaluation of genetic diversity in Brazilian cultivated *Jatropha curcas* L. accessions. *Molecular Biology Report* 38: 245–256.
- Gupta P, Idris A, Mantri S, Asif MH, Yadav HK, Roy JK, Tuli R, Mohanty CS & Sawant SV (2012) Discovery and use of single nucleotide polymorphic (SNP) markers in *Jatropha curcas* L. *Molecular Breeding* 30: 1325–1335.
- Hansen M, Hallden C & Sall T (1998) Error rates and polymorphism frequencies for three RAPD protocols. *Plant Molecular Biology Report* 16: 139–146.
- Heller J (1996) *Physic Nut–Jatropha curcas* L. – *Promoting the Conservation and Use of Underutilized and Neglected Crops*, PhD dissertation. Institute of Plant Genetic and Crop Plant Research, Gatersleben/International Plant Genetic Resource Institute, Germany/Rome, Italy.
- Johnson TS, Eswaran N & Sujatha M (2011) Molecular approaches to improvement of *Jatropha curcas* L. as a sustainable energy crop. *Plant Cell Report* 30: 1573–1591.
- Karp A, Kresovich S, Bhat KV, Ayada WG & Hodgkin T (1997) *Molecular tools in plant genetic resources conservation: a guide to the technologies*. International Plant Genetic Resources Institute (IPGRI) Technical Bulletin no. 2.
- King AJ, Montes LR, Clarke JG, Affleck J, Li Y, Witsenboer H, van der Vossen E, van der Linde P, Tripathi Y, Tavares E, Shukla P, Rajasekaran T, van Loo EN & Graham IA (2013) Linkage mapping in the oilseed crop *Jatropha curcas* L. reveals a locus controlling the biosynthesis of phorbol esters which cause seed toxicity. *Plant Biotechnology Journal* 11: 986–996.
- Kumar S, Kumaria S & Tandon P (2013) SPAR methods coupled with seed-oil content revealed intra-specific natural variation in *Jatropha curcas* L. from northeast India. *Biomass and Bioenergy* 54: 100–106.
- Kumar S, Kumaria S, Sharma SK, Rao SR & Tandon P (2011) Genetic diversity assessment of *Jatropha curcas* L. germplasm from northeast India. *Biomass and Bioenergy* 35: 3063–3070.
- Kumari M, Grover A, Yadav PV, Arif M & Ahmed Z (2013) Development of EST-SSR markers through data mining and their use for genetic diversity study in Indian accessions of *Jatropha curcas* L.: a potential energy crop. *Genes Genome* 35: 661–670.
- Laosatit K, Tanya P, Muakrong N & Srinives P (2014) Development of interspecific and intergeneric hybrids among *Jatropha*-related species and verification of the hybrids using EST–SSR markers. *Plant Genetic Resources: Characterization and Utilization* 12: S58–S61.
- Lerner IM (1954) *Genetic homeostasis*. Oliver and Boyd, Edinburgh and London, 134 p.
- Lia L & Wua LC (2007) Genetic diversity and molecular markers of five snapper species. *Chinese Journal of Agricultural Biotechnology* 4: 39–46.
- Liang YS, Zhang QJ, Wang SQ, Cao LY, Gao ZQ, Li P & Cheng SH (2011) Microsatellite analysis of homozygosity progression of heterozygous genotypes segregating in the rice subspecies cross Pei'ai64s/Nipponbare. *Biochemical Genetics* 49: 611–624.
- Liu K & Muse SV (2005) Power marker: integrated analysis environment for genetic marker data. *Bioinformatics* 21: 2128–2129.
- Machua J, Muturi G, Omondi SF & Gicheru J (2011) Genetic diversity of *Jatropha curcas* L. populations in Kenya using RAPD molecular markers: implication to plantation establishment. *African Journal of Biotechnology* 10: 3062–3069.
- Makkar HPS, Maes J, De Greyt W & Becker K (2009) Removal and degradation of phorbol esters during pre-treatment and transesterification of *Jatropha curcas* oil. *Journal of the American Oil Chemist Society* 86: 173–181.
- Mandpe S, Kadlaskar S, Degen W & Keppeler S (2005) On road testing of advanced common rail diesel vehicles with biodiesel from the *Jatropha curcas* plant. *Society of Automotive Engineers of Japan* 26: 356–364.
- Maurya R, Gupta A, Singh SK, Rai KM, Chandrawati, Sawant SV & Yadav HK (2013) Microsatellite polymorphism in *Jatropha curcas* L.-A biodiesel plant. *Industrial Crops and Products* 49: 136–142.
- Maurya R, Gupta A, Singh SK, Rai KM, Chandrawati, Katiyar R, Sawant SV & Yadav HK (2015) Genomic-derived microsatellite markers for diversity analysis in *Jatropha curcas*. *Tree Structure and Functions* 29: 849–858.

- Mitton JB (1993) Theory and data pertinent to the relationship between heterozygosity and fitness. In: Thornhill NW (ed) *The Natural History of Inbreeding and Outbreeding: Theoretical and Empirical Perspectives*. University of Chicago Press, Chicago, IL, pp. 352–374.
- Mitton JB, Schuster WSF, Cothran EG & De Fries JC (1993) The correlation between the individual heterozygosity of parents and their offspring. *Heredity* 71: 59–63.
- Montes JM, Technow F, Martin M & Becker K (2014) Genetic diversity in *Jatropha curcas* L. assessed with SSR and SNP markers. *Diversity* 6: 551–566.
- Muakrong N, One KT, Tanya P & Srinives P (2013) Interspecific *Jatropha* hybrid as a new promising source of woody biomass. *Plant Genetic Resources: Characterization and Utilization* 12: S17–S20.
- Murovec J, Stajner N, Jakse J & Javornik B (2007) Microsatellite marker for homozygosity testing of putative doubled haploids and characterization of *Mimulus* species derived by a cross-genera approach. *Journal of American Society for Horticultural Science* 132: 659–663.
- Ong HC, Mahlia TMI, Masjuki HH & Norhasyima RS (2011) Comparison of palm oil, *Jatropha curcas* and *Calophyllum inophyllum* for biodiesel: a review. *Renewable Sustainable Energy Review* 15: 3501–3515.
- Openshaw K (2000) A review of *Jatropha curcas*: an oil plant of unfulfilled promise. *Biomass and Bioenergy* 19: 1–15.
- Osorio LRM, Salvador AFT, Jongschaap REE, Perez CAA, Sandoval JEB, Trindade LM, Visser RGF & van Loo EN (2014) High level of molecular and phenotypic biodiversity in *Jatropha curcas* from Central America compared to Africa, Asia and South America. *BMC Plant Biology* 14: 77.
- Pamidimarri DVNS & Reddy MP (2014) Phylogeography and molecular diversity analysis of *Jatropha curcas* L. and the dispersal route revealed by RAPD, AFLP and nrDNA-ITS analysis. *Molecular Biology Report* 41: 3225–3234.
- Pecina-Quintero V, Anaya-Lopez JL, Colmenero AZ, Garcia NM, Colin CAN, Bonilla JLS, Agilar-Rangel MR, Langarica JLS & Bustamante DJM (2011) Molecular characterization of *Jatropha curcas* L. genetic resources from Chiapas, Mexico through AFLP markers. *Biomass and Bioenergy* 35: 1897–1905.
- Pecina-Quintero V, Anaya-Lopez JL, Zamarripa-Colmenero A, Nunez-Colin CA, Montes-Garcia N, Solis-Bonilla JL & Jimenez-Becerril MF (2014) Genetic structure of *Jatropha curcas* L. in Mexico and probable centre of origin. *Biomass and Bioenergy* 60: 147–155.
- Popluechai S, Breviario D, Sujatha M, Makkar HPS, Raorane M, Reddy AR, Palchetti E, Gatehouse AMR, Syers JK, Donnell AGO & Kohli A (2009) Narrow genetic and apparent phenetic diversity in *Jatropha curcas*: initial success with generating low phorbol ester interspecific hybrids. *Nature Precedings* hdl:10101/npre.2009.2782.1.
- Rafii MY, Shabanmofrad M, Edaroyati PMW & Latif MA (2012) Analysis of the genetic diversity of physic nut, *Jatropha curcas* L. accessions using RAPD markers. *Molecular Biology Report* 39: 6505–6511.
- Rao GR, Korwar GR, Shanker AK & Ramakrishna YS (2008) Genetic associations, variability and diversity in seed characters, growth, reproductive phenology and yield in *Jatropha curcas* (L.) accessions. *Trees* 22: 697–709.
- Ricci A, Chekhovskiy K, Azhaguvel P, Albertini E, Falcinelli M & Saha M (2012) Molecular characterization of *Jatropha curcas* resources and identification of population-specific markers. *Bioenergy Research* 5: 215–224.
- Rosado TB, Laviola BG, Faria DA, Pappas MR, Bhering LL, Quirino B & Grattapaglia D (2010) Molecular marker reveal limited genetic diversity in large germplasm collection of the biofuels crop *Jatropha curcas* L. in Brazil. *Crop Science* 50: 2372–2382.
- Sato S, Hirakawa H & Isobe S (2011) Sequence analysis of the genome of an oil-bearing tree, *Jatropha curcas* L. *DNA Research* 18: 65–76.
- Shen J, Khongsak P, David B & Xiaoyang C (2012) AFLP-based molecular characterization of 63 populations of *Jatropha curcas* L. grown in provenance trials in China and Vietnam. *Biomass and Bioenergy* 37: 265–274.
- Sinha P & Tripathi SB (2013) Molecular characterization of *Jatropha* genetic resources through amplified fragment length polymorphism (AFLP) markers. *International Journal of Chemical and Technical Research* 5: 735–740.

- Sirisomboon P, Kitchaiya P, Pholpho T & Mahuttanyavanitch W (2007) Physical and mechanical properties of *Jatropha curcas* L. fruits, nuts and kernels. *Biosystem Engineering* 97: 201–207.
- Soonthornyatara S, Sripichitt P, Kaveeta R & Hongtrakul V (2015) Assessment of genetic diversity of *Jatropha curcas* L. using AFLP and ISSR markers. *Chiang Mai Journal of Science* 42: 614–625.
- Sujatha M & Prabakaran AJ (1997) Characterization and utilization of Indian *Jatropha curcas*. *Indian Journal of Plant Genetic Resources* 10: 123–28.
- Sujatha M, Reddy TP & Mahasi MJ (2008) Role of biotechnological interventions in the improvement of castor (*Ricinus communis* L.) and *Jatropha curcas* L. . *Biotechnology Advance* 26: 424–35.
- Sun QB, Li LF, Li Y, Wu GJ & Ge XJ (2008) SSR and AFLP markers reveal low genetic diversity in the biofuel plant *Jatropha curcas* in China. *Crop Science* 48:1865-1871.
- Tanya P, Taeprayoon P, Hadkam Y & Srinives P (2011) Genetic diversity among *Jatropha* and *Jatropha* related species based on ISSR markers. *Plant Molecular Biology Reports* 29: 252–264.
- Trebbi D, Papazoglou EG, Saadaoui E, Vischi M, Baldini M, Stevanato P, Cettul E, Sanzone AP, Gualdi L & Fabbri A (2015) Assessment of genetic diversity in different accessions of *Jatropha curcas*. *Industrial Crops and Products* 75: 35–39.
- Virk PS, Zhu J, Newbury HJ, Bryan GJ, Kackson MT & Ford-Lloyd BV (2000) Effectiveness of different classes of molecular markers for classifying and revealing variations in rice (*Oryza sativa*) germplasm. *Euphytica* 112: 275–284.
- Yadav HK, Ranjan A, Asif MH, Mantri S, Sawant SV & Tuli R (2011) EST-derived SSR markers in *Jatropha curcas* L.: development, characterization, polymorphism, and transferability across the species/genera. *Tree Genetics and Genomes* 7: 207–219.
- Yahata M, Harusaki S, Komatsu H, Takami K, Kunitake H, Yabuya T, Yamashita K & Toolapong P (2005) Morphological characterization and molecular verification of a fertile haploid pummelo (*Citrus grandis* Osbeck). *Journal of American Society for Horticultural Science* 130: 34–40.